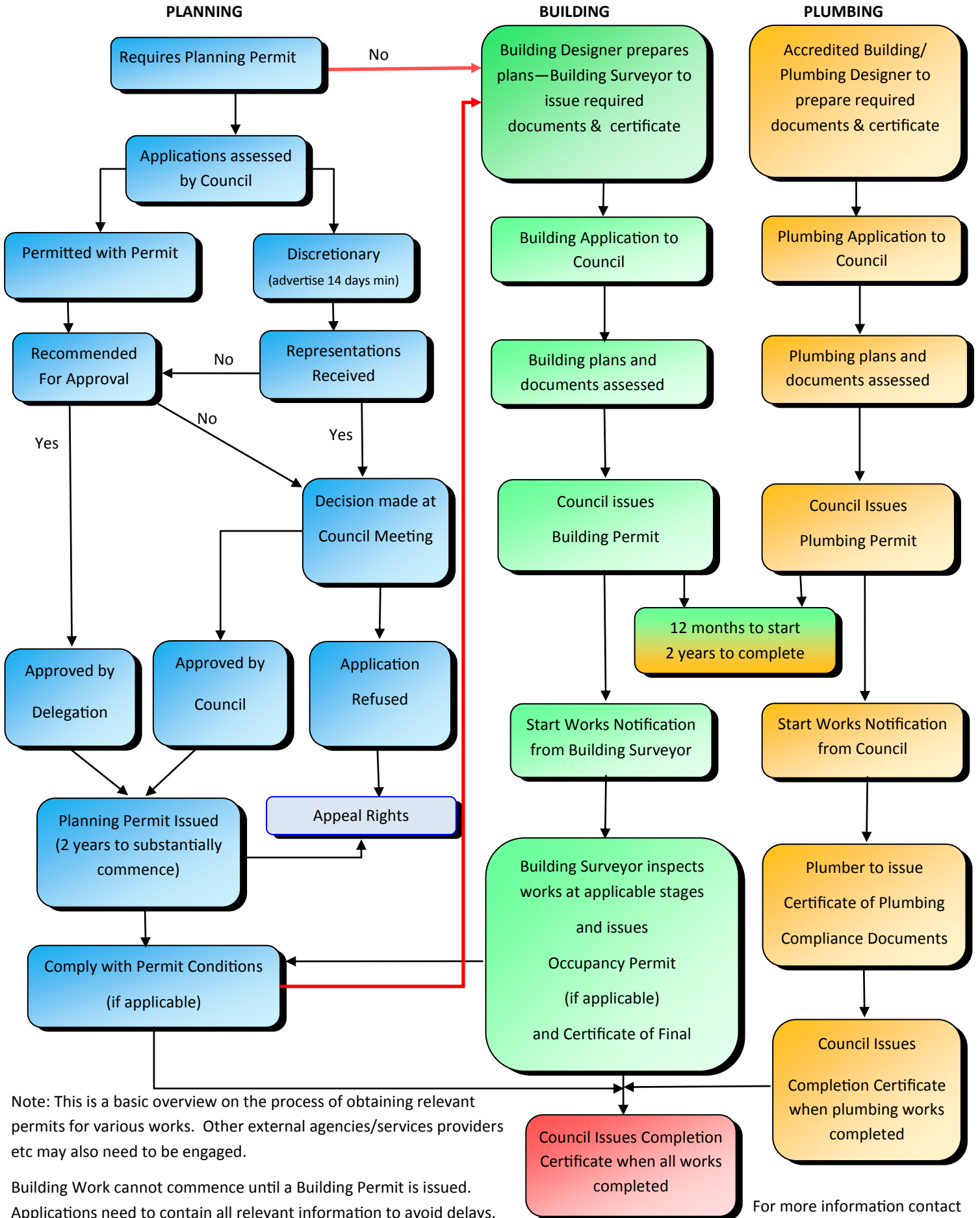




Land Use Planning and Approvals Act 1993

# Planning and Building Application Process

Building Act 2000



Note: This is a basic overview on the process of obtaining relevant permits for various works. Other external agencies/services providers etc may also need to be engaged.

Building Work cannot commence until a Building Permit is issued. Applications need to contain all relevant information to avoid delays.

[www.circularhead.tas.gov.au-council@circlehead.tas.gov.au](http://www.circularhead.tas.gov.au-council@circlehead.tas.gov.au) telephone 6452 4800

For more information contact Council's Development Services Department on 6452 4820